

Professional Scientific Applied Research
Practical Field Study
Feng Shui Metaphysical Sciences,
Xuan Kong Flying Star technique (San Yuan)
Feng Shui Institute, Canada, Quebec

USING ADVANCED KNOWLEDGE WHEN BUYING AN APARTMENT

Author: Gordana Šutanovac
Master of Feng Shui
381 61 68 91 708,
goca.fengsui@gmail.com
Belgrade, Serbia

Translated by Nataša Janković

Belgrade, December 2019

Table of Contents

| | |
|--|----|
| Abstract..... | 3 |
| Introduction..... | 4 |
| The search for an adequate apartment..... | 5 |
| Example number one – Rented apartment..... | 6 |
| Example number two..... | 7 |
| Example number three..... | 9 |
| Example number four..... | 11 |
| Conclusion..... | 15 |
| References | 16 |

Abstract

The idea behind this study is to show a system used when buying real estate, and the system relies on a theory within the field of Feng Shui Flying Star (San Yuan). How to find a perfect apartment for a family? How can we put our knowledge in Classic Feng Shui into practice? I present a methodological approach: the flow of research, evidence, as well as solutions that show how this field of science is at everyone's disposal. All of the mentioned leads us to incredibly precise results.

The example that you will find later in this text represents only one of the dimensions of the Feng Shui practice, the approach to buying real estate, which is neither intuitive nor random, rather it is based on advanced knowledge. The topic is the interaction of a person and her or his surroundings, as well as the implementation of Feng Shui into people's lives. The orientation in space and time. Metaphysical principles have been walking through history and human destiny for centuries. For first comes metaphysics, and only then physics-matter. The ultimate goal of this paper is to understand the reach of Classic Feng Shui and the superb practice of Flying Stars in resolving one of the significant problems of today – buying real estate. The results of the research (after three years' work), when choosing an apartment for a familiar family – they tell us everything! The style of writing is concise, and contains condensed facts that have been proven.

An interested reader will certainly understand that I approach Feng Shui as an independent researcher who questions everything. It is very crucial to have a realistic approach to this field of science without any false pretenses. The same should be applied to all fields, but especially to esoteric branches.

Introduction

In colloquial speech, one can often hear the expression: *Have you lost your compass?* It is important that we always follow the direction of movement, so that everything in our lives can go according to plan. A way or direction has always been of importance, both in sea fare and on the mainland. There is a stance that claims that if you have not learned to orient yourself in space, you will never be able to do so in life either. This is where Feng Shui steps in, when it comes to your workstation, as well as your house or apartment. Feng Shui used to be a privilege of the rulers, the powerful and the rich. It was affordable only for the elite! The knowledge of this technique was available to only a few Feng Shui masters, it was transferred orally and it was expensive. The time has come for this ancient wisdom and technique to be returned to the people. It only takes a little bit of courage to broaden our horizons, and that can be done by giving a chance to the knowledge from the distant past.

Feng Shui is concerned with insubstantial phenomena, energies that are not visible to the naked eye, and yet they exist and are in effect. That is why it is so important. I have personally seen how many techniques, formulas and applications of Classic Feng Shui are confirmed both in the field and in practice. If we already have the tools that enable us to afford the best possible real estate, why would we not use this opportunity? Firstly, we choose a location, a part of the city that we would like to reside in (and we establish whether we have sufficient financial means for the price per square meter in that particular part of the city), and then we start our search for the adequate apartment. It is important that the front door of the apartment is compatible with the date of birth of the owner of the potential real estate, that the degree of compass direction does not coincide with a bad degree (line of death, line of small and great emptiness), and that no unfortunate combinations of mountain and water star are found on the map of the home. The procedure is to deliver the following information on the real estate and its householders: scale floor plan, the year of construction of the real estate, exact compass direction of the front door that lead into the apartment, a description of the surroundings and finally the date of birth of each householder respectively. In the example studied within this paper, we have as a sample a family of five, who live in a smaller town in Serbia. The spouses are middle-aged and they have three daughters. The apparatus needed in this research is a compass, but also the theoretical knowledge and practice in the field of flying stars. The authors who have investigated this topic are listed as primary sources under references at the end of the study.

A basic division when it comes to analysis in Feng Shui is expressed by the means of two methods: San He (three harmonies), and San Yuan (three cycles). San He is more consisted of the older teaching. It encompasses five factors, which are: mountains or elevations, surroundings, meridian points, waters and front orientation. With the help of San He, *we can analyze the external influences, as a base for all the internal occurrences.* This method is the perfect one for when you buy a lot and want to build your own house. However, the situation of today is that we already have apartments and houses in certain locations.

What is left is for us to dedicate more attention to the San Yuan method of analysis at this moment. It is an energy system that is considerably younger. The main topic of this research is the collection of QI energy and its distribution in space. San Yuan also includes a factor of time, that is the change of QI that comes with the change of cycle. The name of the method itself refers to the three cycles: lower, central and higher cycle, over a period of 180 years.

San Yuan has gained great popularity thanks to the methods of Flying Stars and Eight Mansions. Apart from that, San Yuan is convenient for faster results that are more suitable to the demands of urban society.

The search for an adequate apartment

If you are in the process of buying a new apartment in a building, it is of special importance that you conduct a detailed inspection before you decide to buy it. Having such an attitude can be very useful. In today's accelerated pace of life, this small research can be very cost-saving for you. Since the majority of buildings and houses is still not projected according to the principles of Feng Shui (since we have still not learned our lesson), there is room for improvement. And that leads us to the crucial question: *How do we purchase real estate that will not be bad for us?* More and more often we are dealing with the questions of buying apartments. That is why I have chosen a striking example from practice. When a client goes to see real estate she or he will potentially buy, the client is not able to establish on first glance whether the apartment is good or bad. What is often needed is some form of advanced knowledge. That is where Feng Shui steps in. My personal suggestion is that you see about ten houses or apartments until you select at least three.

I have an agreement with a client (who believes in the power of Classic Feng Shui) that she will send me an email containing the floor plan and all the necessary information. That means: compass direction of the front door of the building, compass direction of the entrance to the apartment, floor location, the position of the apartment in the building, the year when the building was constructed, a description of the surroundings, and of course the scale floor plan of the apartment.

She is married and has three adult daughters. She is in office and she travels a lot. One of her daughters lives abroad and is being educated there as well. She used to live with her family in a large apartment, but the apartment had many flaws according to the Feng Shui criteria. When the conditions finally allowed her to do so, she sold the aforementioned apartment. Since they could not find the adequate real estate to suit their needs right away, they decided to rent an apartment for the foreseeable future. They found a spacious apartment in the very center of the city. Laughingly, we joked that she lived in Manhattan. Namely, that part of the city seemed like it was on an island, and yet it was in the very heart of the city. What follows is the analysis of the mentioned real estate, since the owner also made an offer to them to buy the apartment.

The city lies at 43°59' of North latitude and 24°14' of East longitude. The floor plan of the apartment reached me in 2017, along with all the requested information. I could not even imagine where that would lead us.

Firstly, we will start with the analysis of the date of birth, since we are looking for an apartment for a familiar buyer. According to her date of birth, she is KUA number 8, element Earth.

Her good sides of the world are:

For success (Sheng Qi) – Southwest

For health (Tien Yi) – Northwest

For love (Nien Yen) – West

For personal growth (Fu Wei) – Northeast

Her bad compass directions are:

South (Ho Hai), which brings disappointments and failure.

North (Wu Kwei) brings despicable people into one's life. It is described as the traitor of happiness, a sign of the overall presence of lousy people in someone's life, that is, problematic people.

East (Lui Shar) brings six types of ill fortune. Under its influence, nothing can go right. Constantly present are barriers on the road to success, difficulties in earning a fortune, accidents, losses and illnesses. This QI is the bearer of bad news.

Southeast (Cheh Ming), a direction of total loss, signifies the manifest of bad luck. It can be very dangerous, which is why one should be very careful about it.

Example number one – Rented apartment

Information on the rented apartment:

Year of construction is 2002, the building belongs to construction period 7.

Compass direction of the front door is at SW 205 degrees, SW number 1. The floor is the fourth.

The entrance to SW is the best position based on the date of birth, or actually, the KUA number, with 90% of good influences. I approach the analysis by the principles of the flying star method in the field of San Yuan.

The interpretation of mountain and water stars depicts the destiny of the home woven into the walls of the apartment.

I notice the numbers double 7 at the entrance to the apartment. A very advantageous combination in period 7 (1984 - 2003). However, the energies are declining in the current period 8 (2004 - 2024). This result is predictable. When it comes to houses, it is easier to change the period (when it comes to apartments, it is nearly impossible). The energy of the building has been established in the original period of construction and it demands a significant structural adaptation in order to be altered. This often entails the removal of the entire roof (or most of it), floor upgrade, or upgrade of a part of the building. That can be good news (or bad, if it is physically not possible to make that change). Adjustments can also be made on the cosmetic level (colors, materials, arrangement of furniture and similar) though they are less efficient than the ones on *the structural level*.

South, with the combination of numbers of the mountain and water stars 5/9, indicates a risk of accidents with possible hospitalization. Southeast 9/5, mental confusion. Bad mood. Stress. Financial and health risks, as a result of impulsive behavior. Northwest, with the combination 2/3, marital disputes (also indicates too many mouths to feed). Aggressive behavior. There is a possibility of court cases. A turnover of luck. Tenants become modest and significant. The center of the apartment contains the combination 1/4 that indicates fame, and is related to the written word. Stepping out into the public life. Possible problems for one of the householders due to consumption of alcohol. Average luck of fortune. There is a risk of anger.

Table of the flying star for period 7
Entrance to 205 * SW 1, for 2019

| | | SE | S | SW | | |
|---|--|------------|------------|------------|---|--|
| | | 9 5 6 7 | 5 9 2 3 | 7 7 4 5 | | |
| E | | 8 6 5 6 | 1 4 7 8 | 3 2 9 1 | W | |
| | | 4 1 1 2 | 6 8 3 4 | 2 3 8 9 | | |
| | | NE | N | NW | | |

In the North, 6/8 combination says that it is a good family. Southwest 7/7 (front door) says that the way to fortune is through competition. Arguments. Danger of accidents and surgical procedures. East 8/6 points out that period 8 (2004 - 2024) is satisfactory. Gaining authority (good for the bedroom, since the mountain number 8 is excellent in the current period 8). Progress.

West 3/2, tendency to become overweight. Jeopardy for those involved in politics. Conflicts, court cases. Possible divorce (if the differences in character do not reconcile). North 6/8 combination means persistence, effort, financial success. (Perfect for the front door in period 8, if it is possible to make such a structural change). Northwest 2/3, conflict, litigation, accidents. Unfavorable.

It is evident that the lady in question is a writer, she has published two books in her field of profession. On one hand, the energies that are repetitive in the center of the apartment, and also in the Northeast, in sight of the numbers 1/4, signify literary tendencies, and her position in the office demands that she often appears in the media. She has also written a third book which was finished when they lived in this apartment. However, out of the detrimental influences, there is the combination 3/2 in the West (and 2/3 in the Northwest) that indicate possible court cases and troubles for those who are active in the sphere of politics, and all of that has already been reflected in her life during the recent past.

Additionally, she once packed her suitcases to leave her husband, and she moved out, but she came back. The youngest daughter is going through puberty. Common arguments caused a problem and it came to an accident. Unfortunately, the situation escalated (rage, aggressive behavior, combination 2/3), the father pushed the daughter, who fell and hurt her spine, and she was hospitalized (the influence of the combination 5/9). Obesity through the combination 3/2 in the father of the family.

Analysis has shown to us that there she could expect persistence, effort, financial success, advancement. Gains. Tendency toward writing.

The circumstances in this apartment changed for the better, especially for her and her career, and what was also present was her frequent traveling. Since she was putting three children through school (one of them even abroad), the funds from the sold apartment were disappearing quickly. Furthermore, the rent for the apartment they were living in was too high for our circumstances. Nevertheless, *she also wrote her third book* (which is how the combination 1/4 in the center of the apartment and in NE 4/1 was manifested)! The apartment had a price too high for that family, so they decided against purchasing. They have lived in that apartment for several years now, and they will continue doing so until they move to an adequate apartment, that they would buy for themselves. We continue our search.

Example number two

At the start of 2019, the client found the second potential apartment to buy. She informed me that the apartment had been uninhabited for a longer period of time.

Information on the apartment:

Construction period 7 (the building was constructed in 2002),

Compass direction of the front door at 175 degrees, South (belongs to South number 2),

The apartment is located on the fourth floor.

Table of the flying star for period 7,
Entrance to the South number 2, year 2019

| | | | | |
|---|------------------|------------------|------------------|---|
| | SE | S | SW | |
| | 4 1 6 7 | 8 6 2 3 | 6 8 4 5 | |
| E | 5 9 5 6 | 3 2 7 8 | 1 4 9 1 | W |
| | 9 5 1 2 | 7 7 3 4 | 2 3 8 9 | |
| | NE | N | NW | |

The entrance to the South does not agree with the client's KUA number 8, more precisely it brings disappointments and failures. Also, for her spouse (who is KUA number 6), South is a compass direction of complete loss. This real estate was not adequate for several reasons. Above all, the apartment had been empty ever since the building was made. Which is very unusual. Apart from the arguments between the spouses (center of the apartment 3/2, as well as NW 2/3) and possible divorce, what was also highlighted was the negative energy for the youngest child. There was a possibility of becoming involved with drugs and having a bad peer influence, leaving school etc. Namely, in that exact period (year 2018, 2019), the youngest daughter was going through the tougher part of her puberty and was faced with various challenges. Skipping classes, negative influence from friends, lying to parents, not coming home after a night out, troubles with the police.

Reading the previous lines, we can already assume that the client decided against buying this real estate. Who would want the entire force of negativity in their life? On the other hand, we notice that the selection of an apartment is in line with the occurrences in the client's life. Apartments are more difficult to be put in order (due to physical limitations), since the front door of the apartment can hardly be relocated to a more convenient location within a building. And that is *the most important* aspect of the entire work.

The client asked me whether there was a way to overcome the negative energies, so that she can make the decision to buy the apartment after all.

There are three ways to activate (deactivate) stars. The line up is specific: presence of mountain or water, activity or inactivity, as well as elementary improvement.

Characteristics of numbers (stars, that is) are obvious indicators of their nature, as well as of the way they are activated. When it comes to the table of flying stars, water is associated with money and career, whereas mountain is associated with health and types of interpersonal relationships. Water star reacts more quickly to the activation than the mountain star does. Water is faster, more mobile, and mountain is strong. The number of the mountain star is always on the left side of the table, and the water star number is on the right of the upper zone. The trigram number is in the middle of each quadrant, and the number of the year star (for a certain year) on the bottom right. When there are natural characteristics of water, such as rivers, lakes and streams, that is when the water star is activated. When there are hills or mountains, the mountain star is activated. This also

works in a reversed order. This means that mountains are used for deactivating a water star. And water is used to deactivate the sector of the house that has a negative mountain star. In urban areas, what is considered are *virtual* waters, such as the traffic jams on the streets. *Virtual* mountains take the form of tall buildings, or other massive objects. Even though natural formations and features of water are preferred, such as rivers (pools or ponds), roads can achieve the same effect, though less efficiently. When it comes to this apartment in particular, the environment *did not* support the numbers of the flying star. They gave up on the purchase.

Example number three

Towards the end of 2019, the client found a third apartment. Strange and unusual circumstances as well. The apartment was the property of a man who (together with two or three more apartments) lost it by gambling over ten years before. When he was moving out, he demolished the apartment on purpose. He took everything out. He ripped out the parquet, smashed the tiles, took out the water and electricity installations, removed all of the windows! The apartment was sold to a different owner who did not invest anything into the place. Everything remained as it was left for full ten years! My client would have been a potential third owner of the mentioned real estate. The apartment is satisfactory when it comes to square footage (70 m²), it is partially in the attic, and is located on the third floor. When I conducted my analysis as per the system of flying stars, we came to realize that she should not move into that place either. *The price of the apartment was very low*, for understandable reasons, and that was the only thing that was appealing about the place.

Attic apartment, on the third floor.

Information:

Entrance to the West number 1, 249 degrees

Belongs to period number 5 (the building was constructed in 1960)

The warnings about this real estate were of the following type:

Gambling, losses, alcoholism, decline of the family fortune. Predictions and the interpretation of numbers from the home's natal chart *have matched the already experienced and evident occurrences* with the first owner (the second owner never moved in, and there is no information about the possible occurrences that correlate with the stated description).

Furthermore, the interpretation of the numbers tells us the following: arguments in the family, conflicts at work, lawsuits, traffic accidents, surgeries and headaches.

Nevertheless, out of the positive predictions, the numbers indicated that the place was favorable for pupils and students. Good for writers.

Table of the flying star for period number 5,
Entrance to the West number 1, at 249 degrees, and for the year 2020

| | | | | |
|---|---------------|---------------|---------------|---|
| | SE | S | SW | |
| | 2 6 4 6 | 7 2 9 2 | 9 4 2 4 | |
| E | 1 5 3 5 | 3 7 5 7 | 5 9 7 9 | W |
| | 6 1 8 1 | 8 3 1 3 | 4 8 6 8 | |
| | NE | N | NW | |

What was especially intriguing for me was the *crazy women* combination. This occurs when two female stars, 4 tree and 2 Earth meet. By crazy women, it is not implied that the apartment will be inhabited by insane female persons, but rather that the *tenants will face unexpected irrational behavior of other women*, misunderstandings, sudden outbursts of suppressed emotions.

Moreover, tenants will experience not being able to explain logical things to other people (will not be getting reasonable explanations), as well as not being able to organize and control things.

Here we have a combination of trigram number 2 and the year number 4 (in the SW), which would mean that in the year 2020, all of the above can be expected.

On the other hand, the combination trigram number 2 and water star number 4, in the Southwest palace tells us that all of the above can be expected even later on, through time.

The interpretation of numbers in the sense of *favorable* conditions also implied wealth, popularity, advancement. Great financial gains. Career advancement. Everything needs to be weighed out, both the pros and the cons. The client eventually gave up on the purchase, since at that exact moment, she was having problems with her husband on the grounds of his gambling loss, as well as some unjustified lawsuits and court cases at the workplace.

Real estate that has been uninhabited for a long time is a situation that is *the most difficult to explain to a client*. Most of these apartments are on the market at an incredibly low price. If we investigate a little bit deeper, we will find out that your *dream apartment at a low price* has great problems energy-wise, and that it has been under unusual circumstances for many years (or part of court proceedings), which in fact is the reason behind the affordable price of the real estate. More often than not, one family (or more) has gone bankrupt at that very place. Think about it yourself.

Truth to be told, Feng Shui has lesser effect when it comes to apartments, since changes are more difficult to be made due to physical restrictions. However, that is also not the same in every case. There are apartments with considerably better energy and position than some of the already built houses that did not follow the Feng Shui technique when building the house. It is surely necessary to read the energies and potentials of each premise and know where you stand.

As an independent researcher who has been in this field for over two decades, I have to share my prime impression that there is something there. I hope that the reader can see that now as well. What you are looking for is also looking for you.

Example number four

Finally, I receive the data for the last real estate, which is the one they have decided to buy!

Information:

The building was constructed in the year 1990.

Compass direction of the front door of the building – West 1 (249-254 degrees)

Compass direction of the front door of the apartment – Southwest 2/3 (231-233 degrees)

The apartment is on the eighth floor, in the attic.

The entrance to the Southwest is excellent for my client, with even 90% of good influences. As for her husband, SW has 70% of good influences. The entrance to the building, which is to the West, is a good side of the world for both of them.

Table of the flying star for period 7,
Entrance to the apartment to the SW 2/3,
Year 2020

| | | | | | | |
|---|----|---|---|---|----|---|
| | SE | | S | | SW | |
| | 2 | 3 | 6 | 8 | 4 | 1 |
| | | 6 | | 2 | | 4 |
| | | | | 2 | | 4 |
| E | 3 | 2 | 1 | 4 | 8 | 6 |
| | | 5 | | 7 | | 9 |
| | | | | 7 | | 9 |
| | 7 | 7 | 5 | 9 | 9 | 5 |
| | | 1 | | 3 | | 8 |
| | | | | 3 | | 8 |
| | NE | | N | | NW | |

Interpretation of mountain and water stars

In the SW (where the entrance to the apartment is), and in the center of the building, the combination of mountain and water stars number 4/1 is present. It represents *achieving fame through writing*, romantic relationships, but also wisdom. The client has written three books and is currently planning a fourth one.

In the South, we have the combination 6/8, and in the West at the front door 8/6, which speaks of financial success, persistence and progress. The East has the combination 3/2, which is not favorable, since it can mean court proceedings, arguments and accidents. Even to the separation of the spouses.

The Northeast was excellent in the period 7, with the combination 7/7 (but is currently declining during the period 8), and it can indicate thefts, mouth illnesses, as well as a stimulation for the householders to earn a fortune through competition.

The North with 5/9 (and also the Northwest with the 9/5 combination) are also not favorable since they bring the possibility for a fire, a stubborn man in the house, as well as mental confusion caused by stress and great responsibilities. Furthermore, they can be at a financial risk due to impulsive behavior (poor judgment, gambling). We should also have in mind that in the apartments that are located on higher floors (energies of the sky) *good combinations of numbers of mountain and water stars are scattered* (the good nature of the numbers is reduced).

In 2020, the order of the year numbers in the table is *identical* as for the period 7. The trigram number and the number of the year star are repeated, they are doubled. That means that the energies are enhanced, that the pattern is repeated in the double form of the numbers.

Table of the flying star of the building,
the entrance to the building, to the West number 1,
for the period 7 and year 2020

| | SE | S | SW | |
|---|------------|------------|------------|---|
| | 4 8 6 6 | 9 4 2 2 | 2 6 4 4 | |
| E | 3 7 5 5 | 5 9 7 7 | 7 2 9 9 | W |
| | 8 3 1 1 | 1 5 3 3 | 6 1 8 8 | |
| | NE | N | NW | |

The entrance to the building to the West has the combination of mountain and water stars 7/2, which signifies losses. The apartment in the SW part of the building has the combination 2/6, it *brings the predisposition* for wealth and power (in Serbian conditions and standards).

The combination 5/9 in the center of the apartment leads one to beware of fire, but also the stress takes its toll in the form of mental confusion. The Southeast 4/8, financial success, but injuries are possible. The Northwest 6/1, career success, but there is a possibility of a nervous breakdown.

In the East 3/7, court proceedings are possible, financial gain, injuries by metal objects.

Double numbers

Trigram and the year number, meaning

NE 1/1 – academic studies, money (but also affinity for alcohol)

2/2 in the South – negative feelings that lead to diseases, accidents

North 3/3 – arguments, slander

SW 4/4 – writing, flourishing love

East 5/5 – risk of disease

SE 6/6 – financial fortune, help of others

Center 7/7 – victory over competitors, gain

NW 8/8 – wealth

West 9/9 – future prosperity

The decision to buy the property has been made. *The goal has been fulfilled, the most adequate real estate for a familiar buyer.* At the moment (December 2019), the documentation for ownership is in the making. *We will rearrange the property so as to reduce the negative influences to the bare minimum, and to strengthen and maintain the positive ones.* An incorrectly designed building can cause a blockage, that is, the stagnation of energy, which leads to poor health and a lack of concentration. In our further analysis, we will focus our attention on the influence of the surroundings to the numbers of the flying star in the table. The next step is to balance out the Feng Shui of the apartment and to adjust it according to the needs of its residents. *The importance of this technique is not brought into question. The usefulness is manifold. The solutions are advantageous on several levels for each potential client.*

In life, we are often faced with a decision, left or right. The decisions that we make have an influence on the further development of our lives. The questions that are before us have to be resolved faster or slower, and we are never certain whether we have made the correct decision in that given moment. The time that comes after always shows us the outcome of our decisions.

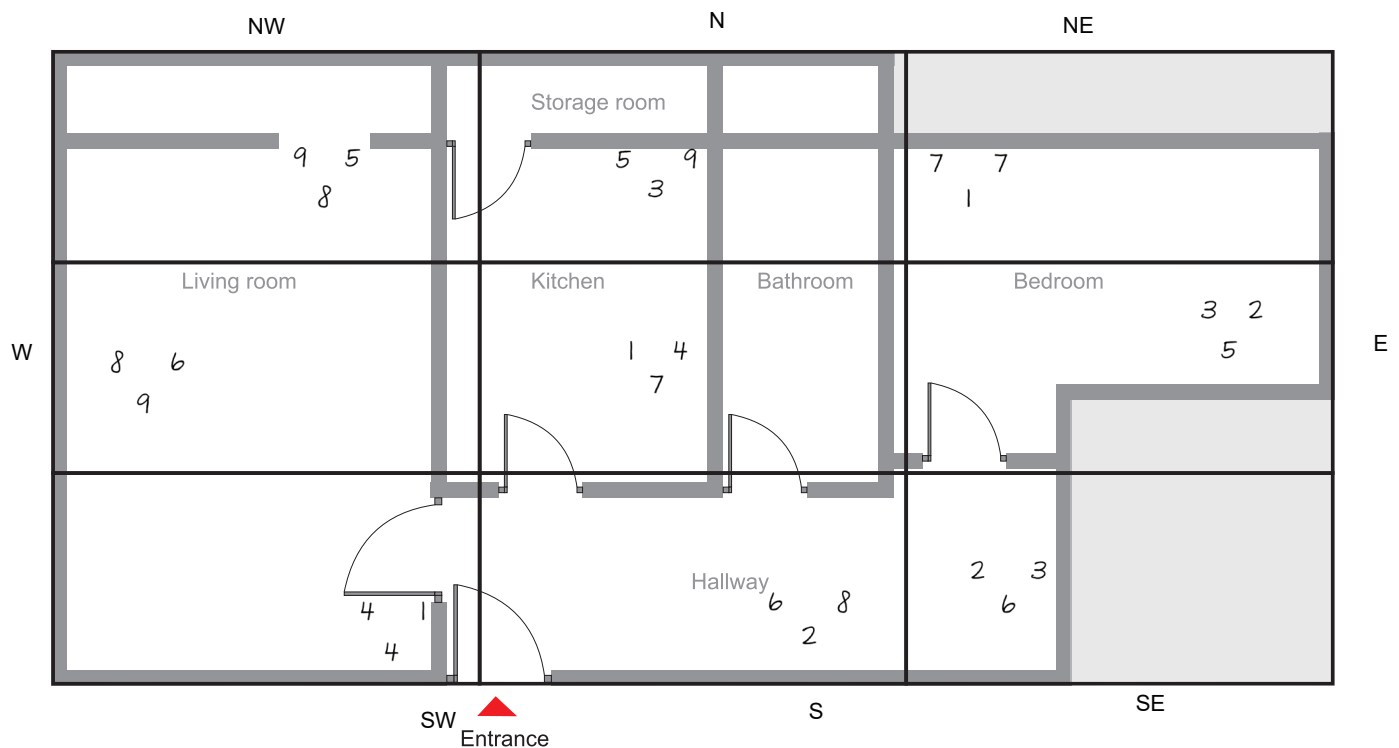
Floor plan of the apartment,

Compass direction of the entrance to the apartment – Southwest 2/3

Considered in accordance with the sides of the world (in a network principle)

Windows are skylight windows, 8th floor – attic

Figure 1
Floor plan of the apartment



Feng Shui has many layers. There is the yin-yang theory, I Ching (trigrams and hexagrams), diagrams of later and earlier sky, 5 elements, the school of compass Luo Pan, Feng Shu school of form (codes that some spaces carry through their physical aspects), San He and San Yuan systems. It is up to the master to decide what of the aforementioned she or he will apply (or several systems simultaneously) when approaching an analysis of a particular space. *Each space is like a fingerprint! Unique and special.*

Life force qi is the main initiator of all life on Earth.

Two cosmic forces, *yin* and *yang*, are the opposites of one another, but they are also complementary. Out of their relationship, five elements are created, that is, five primary ways of movement of energy that are symbolized in the forms of trees, fire, Earth, metal and water. In certain interrelationships, those elements can create one another (support), or else destroy (weaken) each other, thus affecting the entire nature, and ruling over it. Having knowledge of these cycles, that is of the interaction of the elements, a person can use them in order to balance the qi energy.

Conclusion

Feng Shui is a global discipline and it needs to withstand all circumstances. A reliable analysis needs to take into consideration *all parameters*, meaning all of those that the consultant is capable of identifying. *Each space has more or less potential for the improvement of Feng Shui*. Feng Shui has its limitations, just like any other discipline. Boundaries can come from the mere inability to alter physically property or surroundings. Each space has more or less potential for the improvement of Feng Shui. Good and bad, just like good and evil, always coexist, just like Yin and Yang do. The purpose of Feng Shui is to *maintain the majority of the advantageous influences*. However, one needs to accept that there will always be negative influences that we will tend to reduce.

The problem of buying adequate real estate is more and more common in modern times. The main *acknowledgement* is that there is a way to resolve it with the use of the mentioned method. The essence is that the knowledge of the ancient, classic method of Feng Shui is applied in practice in an acceptable way in these fast and turbulent times.

References – primary sources

Creightmore, R. (2011). *Feng Shui secrets of chinese geomancy*. Glastonbury, Somerset, England: Wooden Books Ltd 2011

Feuchtwang, S., (1974). *An antropological analysis of chinese geomancy*. Vientiane, Laos: Editions Vithagna.

Hardy, N. (2016). *Le feng shui*. Paris: Groupe Eyrolles.

Yap, J. (2006). *Feng Shui for homebuyers- interior*. Kuala Lumpur, Malaysia: Mastery Academy of Chinese Metaphysics Sdn. Bhd.

Yap, J. (2007). *Xuan kong flying stars feng shui*. Kuala Lumpur, Malaysia: Mastery Academy of Chinese Metaphysics Sdn. Bhd.

References – secondary sources

Publication manual of the American Psychological Association, (2007)

Suzić, N. (2012). *Pravila pisanja naučnog rada*. [*Rules of writing a scientific paper*] Banja Luka, Bosna i Hercegovina: Panevropski Univerzitet Apeiron.